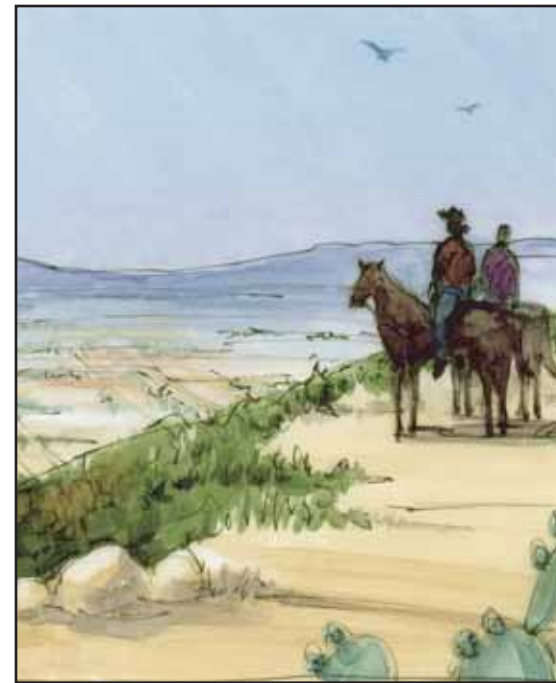
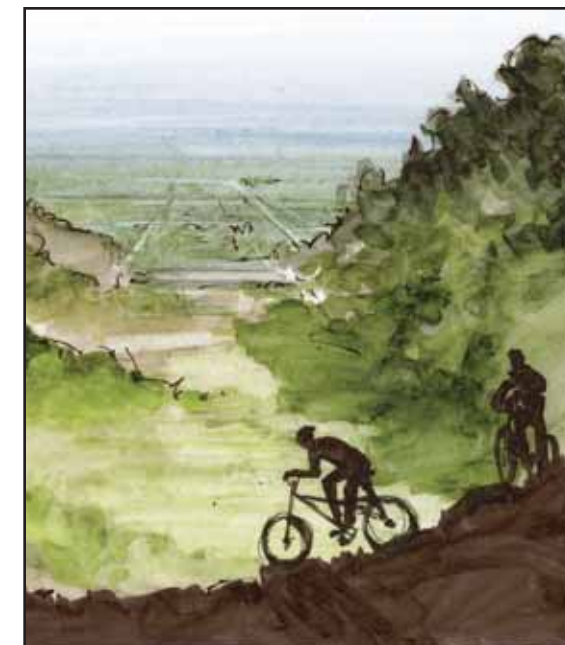


Current Situation

The Altadena Crest Trail currently consists of three unconnected segments. Projected trail needs are based on 11 percent of the 2000 and projected 2020 population participating in hiking, per the National Statistical Abstracts Recreation Participation Rates, and a recommendation of 50 feet of trail per user. The Altadena Community is deficient in trails by 152 miles and is projected to need a total of 191 miles by 2020. The County proposes to amend the Altadena Community Plan to provide a 12.4-mile-long continuous Altadena Crest Trail to serve the diverse needs of County residents and visitors.



Conceptual drawing of proposed trail



Conceptual drawing of proposed trail

Contact Information

For additional information, please contact:

Mr. Adrian Garcia
Analyst
County of Los Angeles
Chief Administrative Office
500 West Temple Street
Los Angeles, California 90012
Phone: (213) 974-4266
Fax: (213) 626-7827

County of Los Angeles
Office of the Fifth District
215 North Marengo Avenue, Suite 120
Pasadena, California 91101
Phone: (626) 356-5407

Trail Description

The proposed 12.4-mile-long Altadena Crest Trail, located in the foothills of the San Gabriel Mountains, would provide hikers, equestrians, mountain bikers, and other users with a continuous path from the Hahamongna Watershed Park to the Eaton Canyon Natural Area. The trail would take recreational users through lush riparian settings, shaded groves of oaks, fragrant patches of coastal sage scrub, and areas of chaparral and other native and drought-tolerant plants. The trail would provide scenic vistas of the San Gabriel Valley, as well as access to cultural resources, including the historic Mt. Lowe Railway.



Conceptual drawing of proposed trail

County of Los Angeles
Chief Administrative Office
500 West Temple Street
Los Angeles, CA 90012



Address

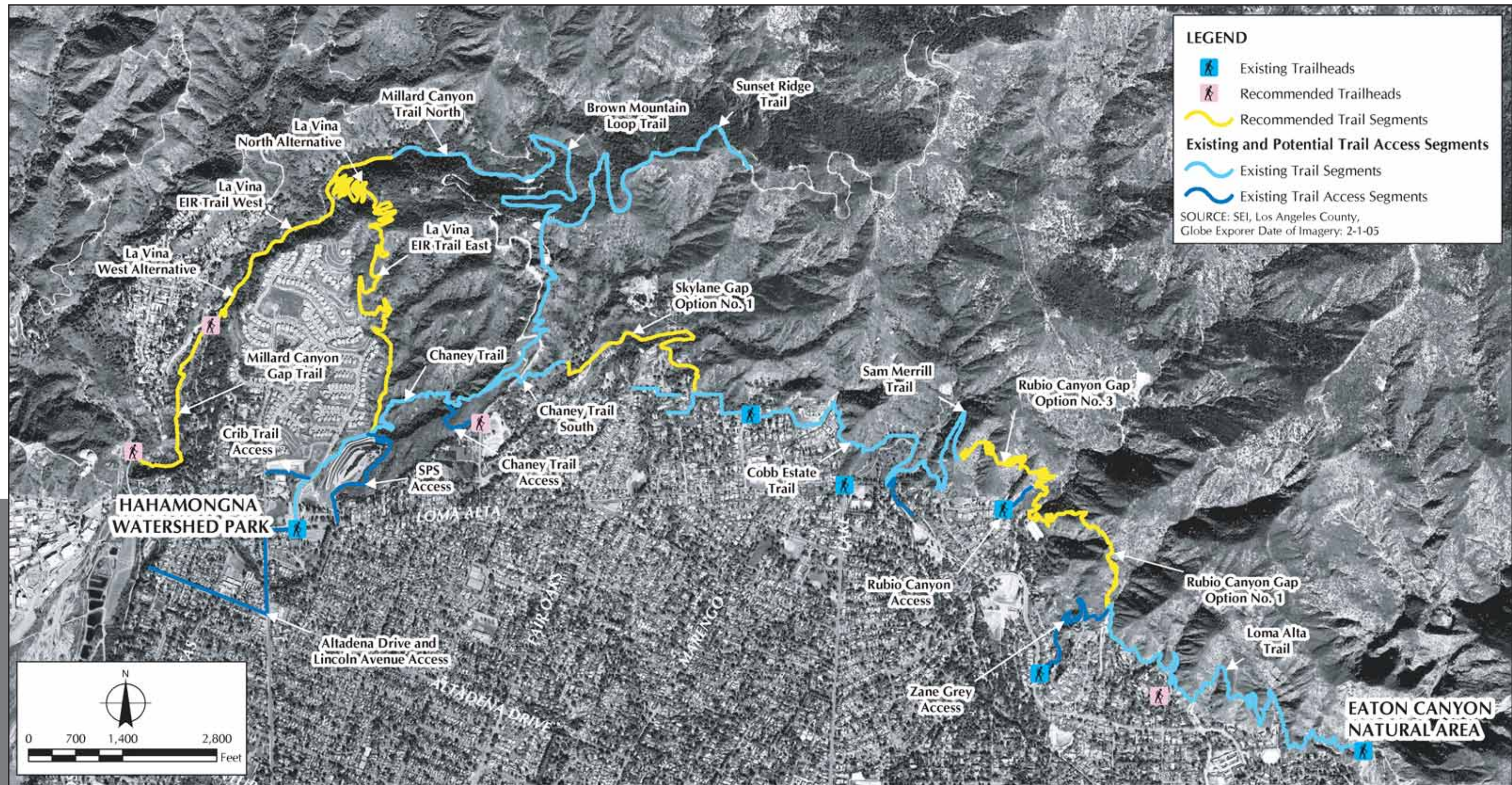


Altadena Crest Trail Information Pamphlet

The County of Los Angeles (County) is proposing to revise the Altadena Community Plan to establish a continuous east-west trail from the Hahamongna Watershed Park eastward to Eaton Canyon Natural Area to complete the Altadena Crest Trail. This trail would be accessible from multiple points throughout Altadena, providing a backbone link to recreational opportunities for the community, including Eaton Canyon Natural Area, the City of Pasadena facilities at Hahamongna

Watershed Park, and trail connections to the Arroyo Seco, the La Cañada trail system, and Angeles National Forest. The County is evaluating the feasibility of trail segments to fill in the four gaps of the trail. The feasibility analysis will serve as the basis for proposed amendments to the Altadena Community Plan. The County is providing this pamphlet to inform the public. Additional public participation will be conducted in accordance with the California Environmental Quality Act.





Trails depicted on this map are based on recognized trails from published sources and known locations of trail easements. Additional trails and easements other than those indicated on this map may exist.

Goal

The goal of the Altadena Crest Trail Improvements is to provide a continuous trail from Hahamongna Watershed Park on the west to Eaton Canyon Natural Area on the east to serve the diverse needs of County residents and visitors in the interface between the densely populated San Gabriel Valley and the Angeles National Forest.

Objectives

The County has established several objectives necessary to achieve the goal:

1. Define a continuous trail alignment between Hahamongna Watershed Park and Eaton Canyon Natural Area that is at least 3 feet wide, with a maximum grade of 15 percent.
2. Develop a regional trail that is consistent with the goals and policies set forth in the County General Plan and Altadena Community Plan of providing recreation facilities and programs that serve the diverse needs of County residents and visitors.
3. Construct, operate, and maintain new facilities capable of offsetting the unmet demand for trails in the County.
4. Provide trail access within a reasonable walking distance of Altadena Community residents.

County of Los Angeles Board of Supervisors

Gloria Molina, First District
 Yvonne B. Burke, Second District
 Zev Yaroslavsky, Third District
 Don Knabe, Fourth District
 Michael D. Antonovich, Fifth District

5. Site trail segments in locations suitable for conservation and interpretation of native habitats and ecosystems.

6. Define trail segments that are conducive to protection and interpretation of cultural resources, particularly the Gabrieleno National Recreation Trail and the Mt. Lowe Railway.

7. Maintain and operate trails consistent with best management practices.

8. Define a regional planning framework to provide for trail development as a component of the entitlement process.

9. Design aesthetically pleasing trails that provide access to scenic vistas with views of San Gabriel Valley, San Gabriel Mountains, Arroyo Seco, and Channel Islands.

10. Ensure that developments in the Altadena Community contribute a fair share for the development, operation, and maintenance of the Altadena Crest Trail.

Meeting the Needs

- The County of Los Angeles General Plan states that "priority should be given to park deficient areas" for the "development of public and private parks, campgrounds, equestrian, biking and hiking trails."
- A County Trails Manual will be developed to provide standards to address design, widths, grades, and construction guidelines for kiosks, parking, restrooms, and other trail amenities. The manual will provide a method for meeting community needs for open space and trails.
- In a recent survey conducted with residents of the adjacent City of Pasadena, 67 percent gave trails and open space the highest possible participation rating.
- Four gaps have been identified in the Altadena Crest Trail, and 11 potential trail segments have been evaluated to fill those gaps.
- The Altadena Crest Trail provides recreational users with a unique opportunity for interpretation of the region's natural resources by traversing six plant communities.
- The trail improvements preserve and provide access to historic passages, thus providing a sense of place and an understanding of shared history by allowing visitors to experience paths taken by Native Americans.
- Ten trailheads, one new parking facility, and two restroom facilities have been recommended to ensure that access and usability are enhanced and maintained for both new and existing trail systems.
- Incorporating the continuous Altadena Crest Trail in the Altadena Community Plan will ensure that the trail is developed in an appropriate manner and that future developments are consistent with the regional trail concept.
- The proposed trail would provide access to multiple vista points with a potential maximum elevation of 2,789 feet. The trail would provide a link to other trails that lead to Mt. Echo at an elevation of 3,207 feet, Mt. Lowe at an elevation of 5,603 feet, and Mt. Wilson at an elevation of 5,710 feet.

Altadena Crest Trail

